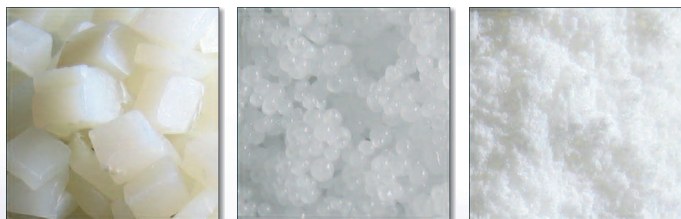


The Container Docking Station **SCS**



Static or with integrated device for easy product flow

No separation, no packing

Automatic functioning

Self adaptation to the product

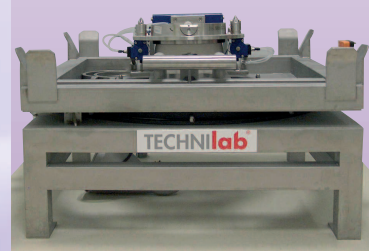
Patented system

Usable for all types of transfer : gravity, mechanic or vacuum transfer

Version with total dust containment and double butterfly valve



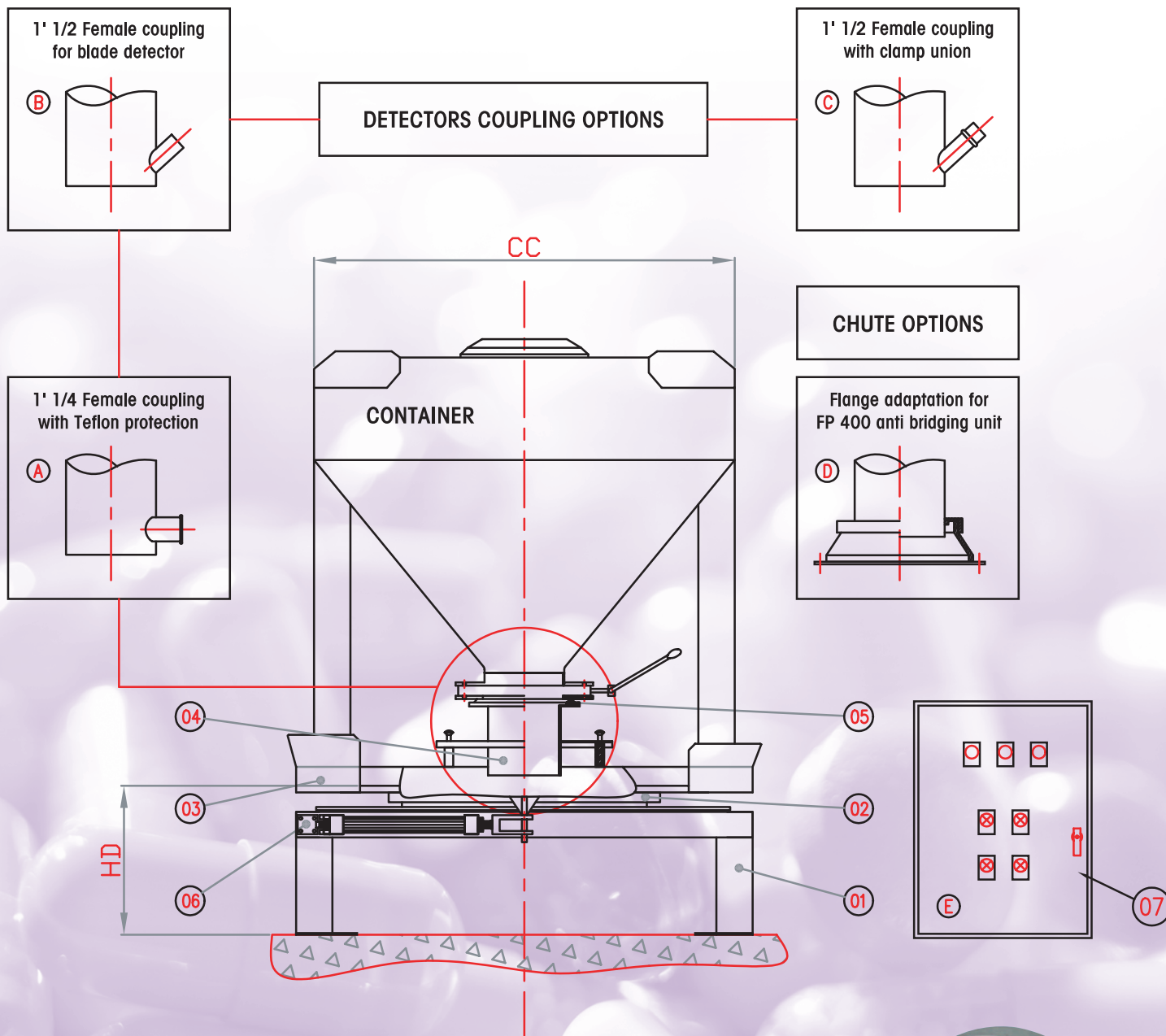
TECHNIlab®



Version with total dust containment



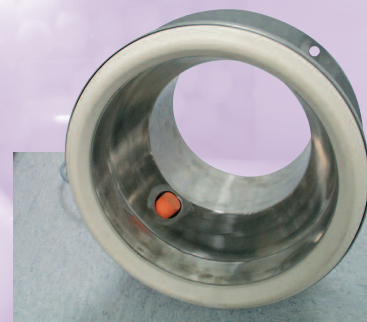
The Container Docking Station SCS



Rep.	Qty	Designation	Material
01	1	Frame	304 L Stainless Steel
02	1	Crown bearing	
03	1	Mobile frame	304 L Stainless Steel
04	3	DN 250 chute	304 L or 316 L Stainless Steel
05	1	Tight ring	Nitril
06	1	Compressed air cylinder	Multiple
07	1	PLC control panel	Carbon Steel Epoxy Coated

Options

Rep.	Qty	Designation
A	1	INDUCTIVE DETECTOR (1' 1/4 Teflon protection)
B	1	BLADE DETECTOR (1' 1/2 Femal coupling)
C	1	BLADE DETECTOR (Femal coupling + clamp union)
D	1	FLANGE ADAPTATOR FOR FP 400 ANTI BRIDGING UNIT
E	1	STAINLESS STEEL CONTROL PANEL



PARAMETERS

TH : Total Height = 725 mm

CC : Standard Container Dimension : L = 1325 ; l = 1125 mm

Overall dimension during rotation : L = 1600 ; l = 1450 mm

Total mass : 130 kg

TECHNIlab®

30 bis, rue du Bois Chaland - CE 2948 • 91029 EVRY Cedex FRANCE

Tél. : +33 (0)1 60 86 96 48 • Fax : +33 (0)1 60 86 90 01

www.technilab.fr